

HIGH DEFINITION MAGNETIC SENSOR

AB-MG-CNS-MGS-080N、 AB-MG-CNS-MGS-160N

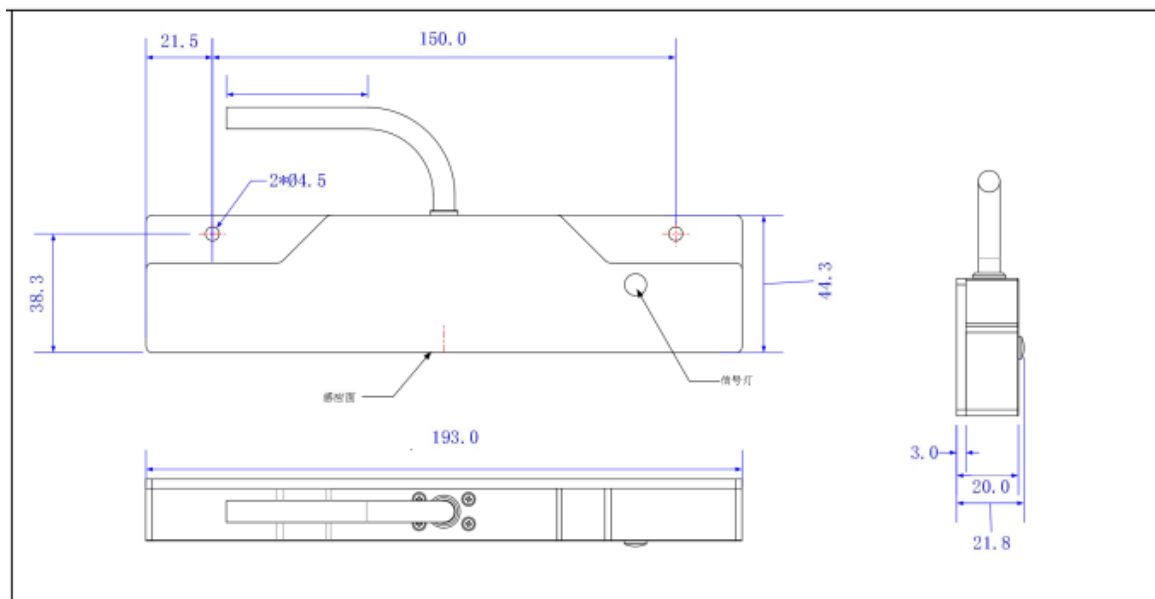
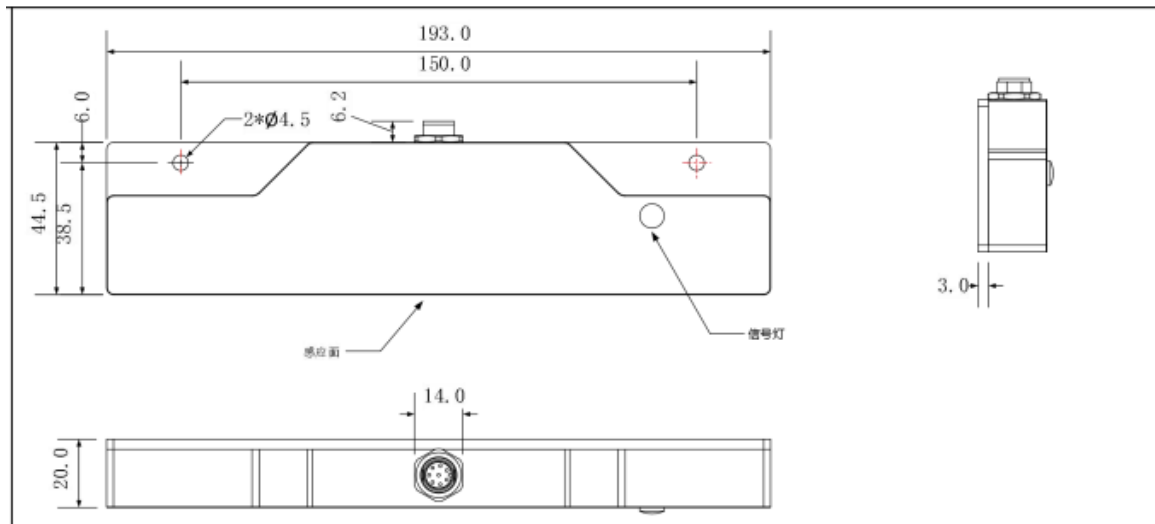
ATOMBOTIX



- **Detection range: $\pm 70\text{mm}$**
- **Interval between points: 20mm**
- **Number of switching points: 8**
- **Accurate: 3mm**
- **Communication: RS232、 RS485、 CAN、 CAN OPEN**
- **Protection level: IP67**

Model	AB-MG-CNS-MGS-080N	AB-MG-CNS-MGS-160N
Performance parameter		
Detection Height	10-50mm	
Detection Range	$\pm 70\text{mm}$	$\pm 75\text{mm}$
Accuracy	3mm	1mm
Number of Magnetic Stripe Detection Times	8 /16 Software adjustable	16
Distance Between Detection Points	20mm	10mm
Sensitivity	0-9 levels (software configurable)	
Inductive Polarity	N-pole, S-pole, NS pole (software configurable)	
Detection Signal	N/S pole magnetic field signal	
Response Time	5ms	
Basic Error	3mm	1mm
Detection Range of Magnetic Field	1.5-95 Gauss	
Number of Magnetic Stripe Detections	3 items	
Magnetic Stripe Position Deviation Data	Support	
Magnetic Field Strength Detection Data	Support	
Position Output	Support	
Switch Signal Output	Support	
Intensity Signal Output	Support	
Fork Selection Function	Support (left switch, straight, right switch commands)	
Interface		
RS232-HS	√	
RS485-HS	√	
RS485-MODBUS	√	
CAN-HS	√CAN 2.0A、 CAN2.0B	
CANOPEN	√	

Mechanical/Electrical Parameter	
Rated Voltage	24V±10%
Working Voltage	10~32V
Current Consumption	<20mA typical value
Power Consumption	< 0.5W
LED Indicator	Red and green LED indicators
Protection Level	IP67
Standard Configuration	1.5 meters (optional for 3 meters and 6 meters)
Shell Material	Aluminium alloy
Environmental parameter	
Background Magnetic Field	<1 Gauss
Ambient Temperature	-10°C~50°C



www.atombotix.com
contact@atombotix.com

